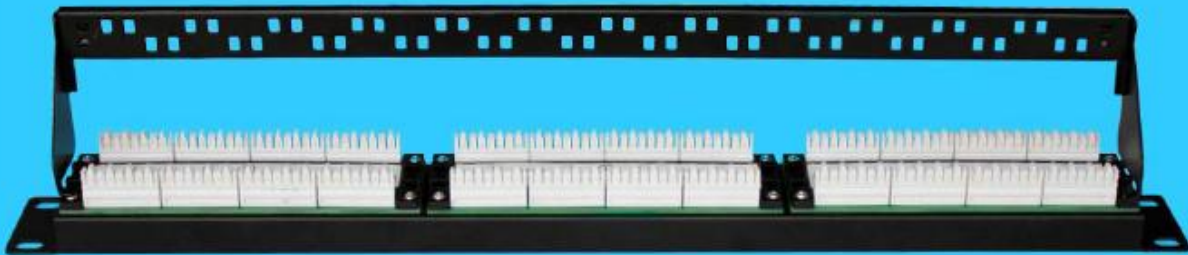


DATA-TRONIX

DT-CAT624P-LED Patch Panel Installation Instructions

P/N: DT-CAT624P-LED



PACKAGE CONTENTS

This package contains:

One DT-CAT624P-LED Patch Panel with LED identifiers
One DT-CAT624P-LED Installation Manual

PRODUCT DESCRIPTION

The DT-CAT624P-LED Light Identification Patch Panel, in which LED's are embedded above each port, allows you to identify ports and troubleshoot your network.

This particular technology includes a Patch Panel with a dual color LED above each port, and by injecting a signal with the optional DT-FLX-CPCTR LED handheld transmitter at the wall plate end, port paths are immediately identified, and cabling faults exposed.

Problems associated with hard-to hear tones is a thing of the past. Tracing ports, finding faults, especially with two people, makes port identification lightning fast.

IMPORTANT INFORMATION



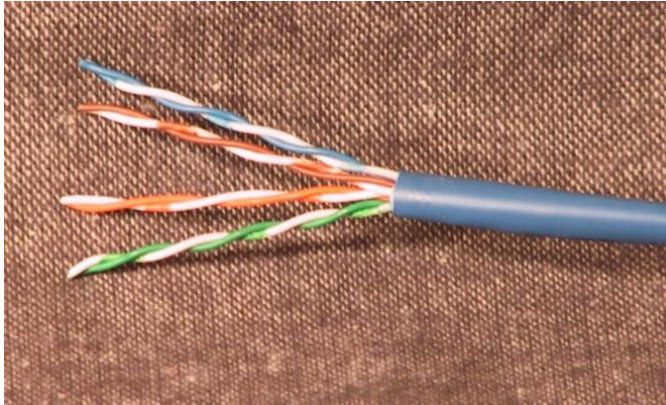
The lightning flash with arrowhead symbol, within an equilateral triangle, is intended to alert the user to the presence of uninsulated "dangerous voltage" within the product's enclosure that may be of sufficient magnitude to constitute a risk of electric shock to persons.



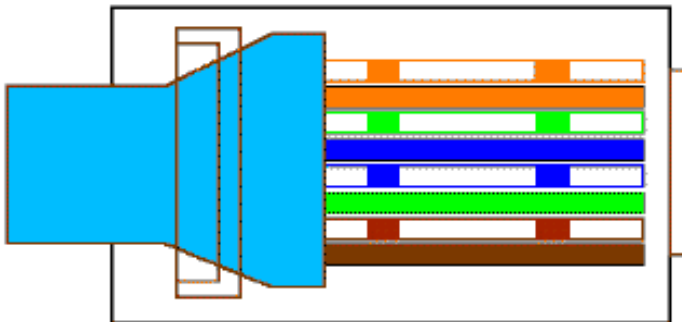
The exclamation point within an equilateral triangle is intended to alert the user to the presence of important operating and maintenance (servicing) instructions in the literature accompanying the appliance.

WARNING : TO REDUCE THE RISK OF FIRE OR ELECTRIC SHOCK, DO NOT EXPOSE THIS APPLIANCE TO RAIN OR MOISTURE. DO NOT OPEN THE CABINET, REFER SERVICING TO QUALIFIED PERSONNEL ONLY.

- 1) Strip off no more than 1.5 inches (3.8cm) of the jacket from the end of the cable. Do not remove any more of the cable jacket than you absolutely have to.

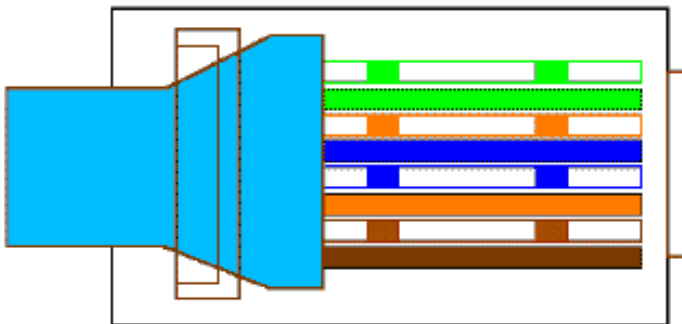


- 2) Untwist the pairs and place the wires on the IDC block in the correct configuration for either T568A or T568B. The un-twisted part of the wires CANNOT exceed 1/2".



T568B
Colors

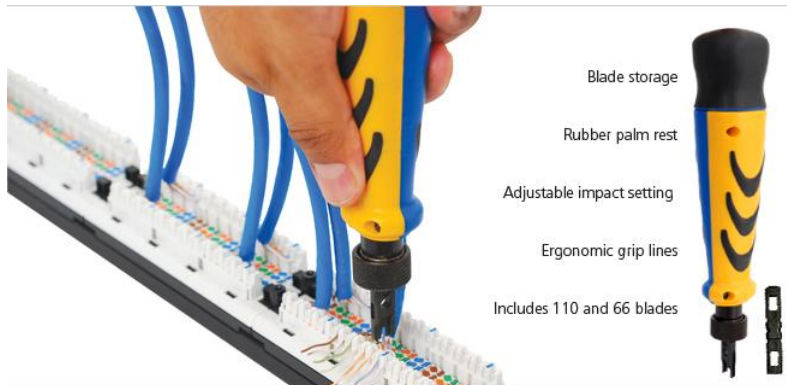
Locking tab is facing down or away from you in this view



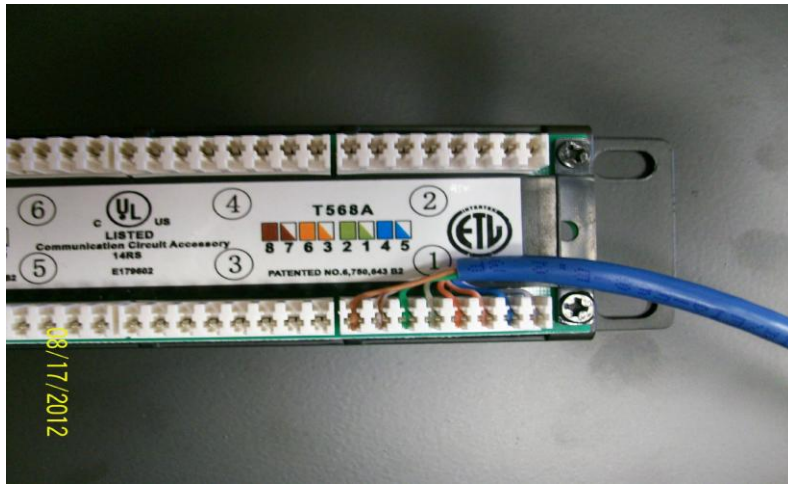
T568A
Colors

Locking tab is facing down or away from you in this view

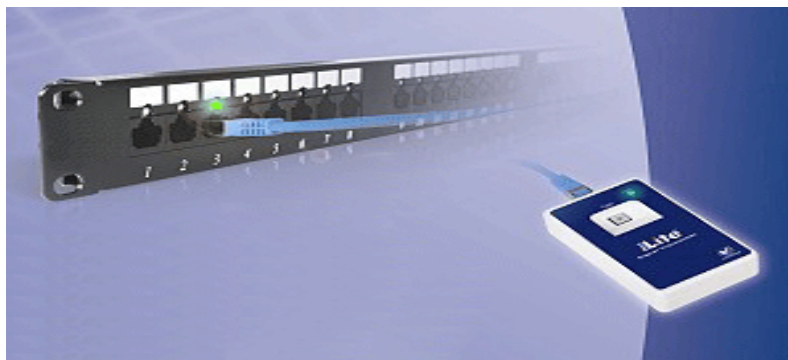
- Using a punch down tool, such as the Platinum Tools 13109C, punch the wires into position.



- Cut off any excess wires from the edges



- Repeat steps 1-4 for required amount of cables.
- Using the optional DT-FLX-CPCTR LED patch panel signal transmitter tool for port identification will allow easy identification of the port being used by illuminating the LED that corresponds to the cable being tested.



Troubleshooting assistance can be found on-line at www.datatronix.biz in addition to support from Datatronix sales engineers at 1-610-429-1511.