

# DATA-TRONIX®

## DT-USBWP-DUAL-20A-WH

Single Duplex Wall Plate with Dual USB Charging Ports

### Introduction

Thank you for purchasing this DataTronix product! This USB wall plate is the easiest way to add USB Fast-Charging capability to 20 Amp commercial duplex electrical outlets in a home or business. For 15 Amp or Decora design outlets, contact your DataTronix dealer for alternate units.

Simply replace an existing single duplex wall plate with the DT-USBWP-DUAL-20A-WH and enjoy easy device charging that's always ready to go. The wall plate connects to a 20 amp standard duplex outlet and provides 2 USB charging ports without using up either outlet electrical socket.

Please follow these directions carefully to safely install this product.

### CAUTION ⚠

It is critical to confirm that power has been shut off from the fuse panel or circuit breaker box to the designated outlet before starting the replacement. Replacement of electrical system wall plates cannot be done safely unless power has been disconnected at the breaker panel or fuse panel for the property. Test the outlet, with a voltage meter capable of making the proper readings prior to the installation of the wall plate, to ensure power has been disconnected.

A flat head screwdriver is needed for this installation:

### Installation

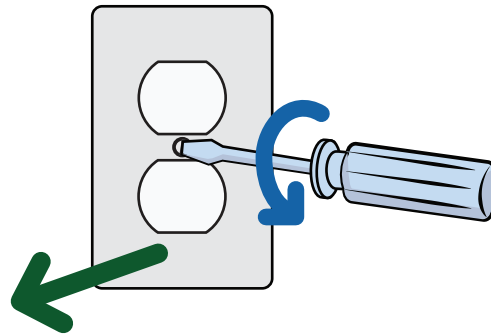
Installing this wall plate takes just 3 simple steps:

**1** Locate the electrical cutoff point (breaker panel, fuse panel, etc.) for the outlet to be used. Turn off the breaker switch or remove the fuse.

*Hint - It may help to plug in a lamp or similar device to the outlet and turn it on. When you have found the correct breaker or fuse, the light will go out. Additionally, test the outlet with a voltage meter capable of making the proper readings prior to the installation of the wall plate to ensure power has been disconnected.*

**⚠** Do not remove the outlet's wall plate until you are certain that the outlet is not live. Exposed, live 120 volt AC devices such as wall outlets and light switches can cause severe injury, even death.

**2** Using a flat head screwdriver, remove the existing wall plate. The screw is located directly between the 2 sockets of the outlet. Turn the screwdriver counter-clockwise to remove the screw:

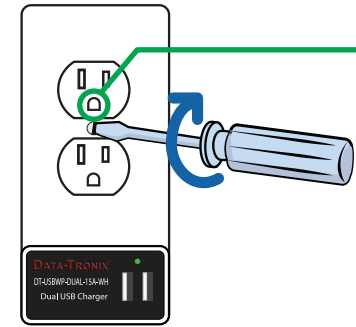


*Hint - It's possible for the wall plate to be 'stuck' to the wall from being installed over wet paint or being painted over. This can sometimes peel paint from the wall when the wall plate is pulled off. To reduce the chance of paint damage, lightly score the corner where the wall plate makes contact with the wall.*

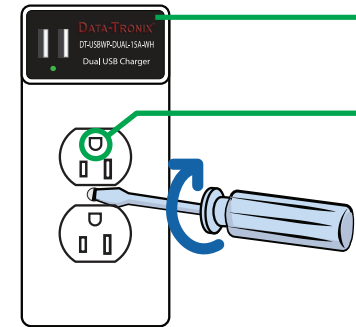


**3** Line up the 2 outlet holes in the USB wall plate over the 2 raised sockets of the exposed outlet, and press the wall plate straight back onto the outlet. Ensure the 2 metal contacts on the back of the wall plate are aligned with the metal contacts on the sides of the electrical outlet. Using a flat head screwdriver, install the new plate by turning the screw clockwise to tighten it.

**NOTE:** Many 20 amp outlets are installed with the ground pin facing up (see following illustration). If your outlet is installed with the ground pin on top, install the wall plate as shown below. If your outlet has the ground pin facing down, install the wall plate with the USB ports on the top and use the included sticker to relabel the wall plate so the writing is right side up.



If the ground pin is below the 2 slots, then install the USB wall plate with the USB ports on the bottom.



"right side up" sticker

If the ground pin is above the 2 slots, then install the USB wall plate with the USB ports on top. Use the included sticker to relabel the wall plate "right side up".

### Operation

To use the wall plate's charging function, simply connect your device's USB cable to one of the 2 USB ports on the wall plate and the other end to your device, just as with a standard wall-unit charger.

Follow the instructions for your device to determine how long to charge it.

The wall plate gets power from the outlet on which it's mounted. There is no maintenance needed. The charger should be ready to go at all times as long as there is power at the outlet.

### Cleaning

Clean the DT-USBWP-DUAL-20A-WH with a soft, dry cloth. If a mild detergent is needed to clean tougher spots, shut off the outlet from the fuse panel or circuit breaker box and use care to ensure that no moisture gets inside the USB ports or outlets on the front of the unit.

## Troubleshooting

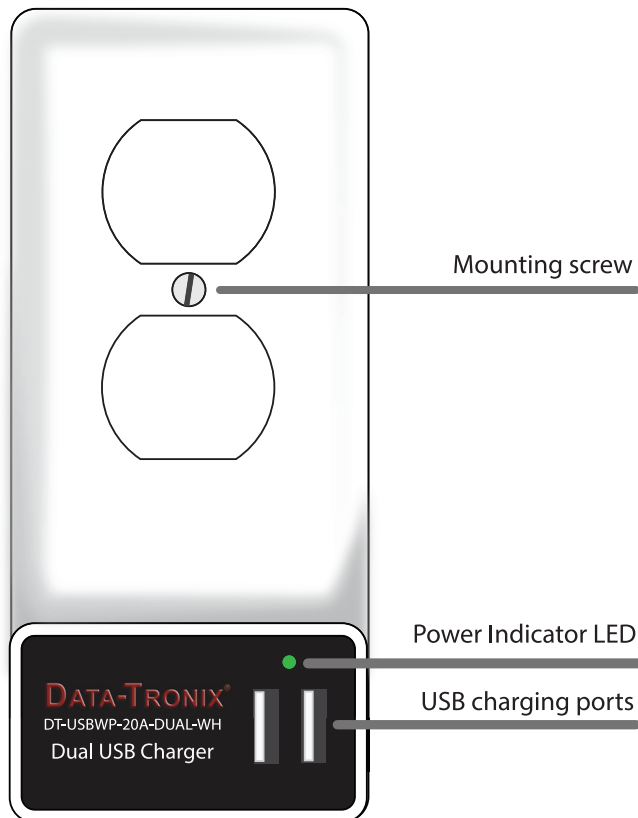
Installation of this device should be very simple and straightforward. If you experience a problem this may help to resolve it:

**Symptom:** The green LED does not light, or lights intermittently.

**Cause:** The wall plate prongs are not properly making contact with the side of the outlet.

### Solutions:

- a. Ensure the wall plate is fully seated on top of the outlet.
- b. Ensure that the screw is tightened snugly.
- c. Ensure that the two electrical sockets are at least flush with the plate, or slightly protruding out from the plate



## DATATRONIX 1-Year Limited Warranty

DATATRONIX. (the "Company") warrants to the Original Purchaser that the item purchased is free from defects in workmanship or material under normal use. This warranty starts on the date of shipment of the hardware to the Original Purchaser.

During the warranty period, the Company agrees to repair or replace, at its sole option, without charge to Original Purchaser, any defective component. To obtain service, the Original Purchaser must return the item to the Company properly packaged for shipping. All defective products must be returned to the Company within thirty (30) days of failure. Products must be returned with a description of the failure and Return Merchandise Authorization (RMA) number supplied by the Company. To receive a RMA number and a return shipping address on where to deliver the hardware, call 610-429-1821. The shipping, and insurance charges incurred in shipping to the Company will be paid by Original Purchaser, and all risk for the hardware shall remain with the Original Purchaser until such time as Company takes receipt of the hardware. Upon receipt, the Company will promptly repair or replace the defective unit, and then return said unit to Original Purchaser, shipping prepaid. The Company may use reconditioned or like-new parts or units, at its sole option, when repairing any hardware. Repaired products shall carry the same amount of outstanding warranty as from original purchase. Any claim under the warranty must include dated proof of purchase or invoice. In any event, the Company's liability for defective hardware is limited to repairing or replacing the hardware.

This warranty is contingent upon proper use of the hardware by Original Purchaser and does not cover: if damage is due to Acts of God (including fire, flood, earthquake, storm, hurricane or other natural disaster), accident, unusual physical, electrical, or electromechanical stress, modifications, neglect, misuse, operation with media not approved by the Company, tampering with or altering of the hardware, riot, war, invasion, act of foreign enemies, hostilities (regardless of whether war is declared), civil war, rebellion, revolution, insurrection, military or usurped power or confiscation, terrorist activities, nationalization, government sanction, blockage, embargo, labor dispute, strike, lockout or interruption or failure of electricity, air conditioning, or humidity control, internet, network, or telephone service

The warranties given herein, together with any implied warranties covering the hardware, including any warranties of merchantability or fitness for a particular purpose, are limited in duration to one year from the date of shipment to the Original Purchaser. Jurisdictions vary with regard to the enforceability of warranty limitations, and you should check the laws of your local jurisdiction to find out whether the above limitation applies to you.

The Company shall not be liable to you for loss of data, loss of profits, lost savings, special, incidental, consequential, indirect, or other similar damages arising from breach of warranty, breach of contract, negligence, or other legal action even if the Company or its agent has been advised of the possibility of such damages, or for any claim brought against your by another party. Jurisdictions vary with regard to the enforceability of provisions excluding or limiting liability for incidental or consequential damages. You should check the laws of your local jurisdiction to find out whether the above exclusion applies to you.

This warranty allocates risks of product failure between Original Purchaser and the Company. The Company's hardware pricing reflects this allocation of risk and the limitations of liability contained in this warranty. The warranty set forth above is in lieu of all other express warranties, whether oral or written. The agents, employees, distributors, and dealers of the Company are not authorized to make modification to this warranty, or additional warranties binding on the Company. Accordingly, additional statements such as dealer advertising or presentations, whether oral or written, do not constitute warranties by the Company and should not be relied upon. This warranty gives you specific legal rights. You may also have other rights which vary from one jurisdiction to another.

## Contact

If you have any questions or concerns which are not addressed in this document, please contact DataTronix tech support. Do not attempt to troubleshoot any electrical outlet without proper training.

DATATRONIX:

Tech support: (610) 429-1821, press 3, then 4.

1085 Andrew Dr. Ste A  
West Chester PA 19380



Producer Vistek Technology Co.,Ltd MADE IN CHINA