

Digital Video Recorder

Quick Start Guide

TABLE OF CONTENTS

Chapter 1	Description of Panels	6
1.1	Front Panel	6
1.2	Rear Panel	7
Chapter 2	Installation and Connections.....	8
2.1	DVR Installation.....	8
2.2	Hard Disk Installation.....	8
2.3	RS-485 and Controller Connection.....	10
2.4	HDD Storage Calculation Chart	11
Chapter 3	Menu Operation	12
3.1	Menu Structure	12
3.2	Startup and Shutdown.....	12
3.3	Activating Your Device	13
3.4	Login and Logout	14
	User Login	14
	User Logout	15
3.5	Configuring the Signal Input	16
3.6	Using the Setup Wizard	17
3.7	Network Settings	17
3.8	Adding IP Cameras.....	18
3.9	Live View	19
3.10	Recording Settings.....	20
3.11	Playback	20
Chapter 4	Accessing by Web Browser.....	22

Quick Start Guide

This Manual is applicable to Turbo HD Digital Video Recorder (DVR).

The Manual includes instructions for using and managing the product. Pictures, charts, images and all other information hereinafter are for description and explanation only. The information contained in the Manual is subject to change, without notice, due to firmware updates or other reasons. Please find the latest version in the company website

Please use this user manual under the guidance of professionals.

Legal Disclaimer

REGARDING TO THE PRODUCT WITH INTERNET ACCESS, THE USE OF PRODUCT SHALL BE WHOLLY AT YOUR OWN RISKS. OUR COMPANY SHALL NOT TAKE ANY RESPONSIBILITIES FOR ABNORMAL OPERATION, PRIVACY LEAKAGE OR OTHER DAMAGES RESULTING FROM CYBER ATTACK, HACKER ATTACK, VIRUS INSPECTION, OR OTHER INTERNET SECURITY RISKS; HOWEVER, OUR COMPANY WILL PROVIDE TIMELY TECHNICAL SUPPORT IF REQUIRED.

SURVEILLANCE LAWS VARY BY JURISDICTION. PLEASE CHECK ALL RELEVANT LAWS IN YOUR JURISDICTION BEFORE USING THIS PRODUCT IN ORDER TO ENSURE THAT YOUR USE CONFORMS THE APPLICABLE LAW. OUR COMPANY SHALL NOT BE LIABLE IN THE EVENT THAT THIS PRODUCT IS USED WITH ILLEGITIMATE PURPOSES.

IN THE EVENT OF ANY CONFLICTS BETWEEN THIS MANUAL AND THE APPLICABLE LAW, THE LATER PREVAILS.

Regulatory Information

FCC Information

FCC compliance: This equipment has been tested and found to comply with the limits for a Class A digital device, pursuant to part 15 of the FCC Rules. These limits are designed to provide reasonable protection against harmful interference when the equipment is operated in a commercial environment. This equipment generates, uses, and can radiate radio frequency energy and, if not installed and used in accordance with the instruction manual, may cause harmful interference to radio communications. Operation of this equipment in a residential area is likely to cause harmful interference in which case the user will be required to correct the interference at his own expense.

FCC Conditions

This device complies with part 15 of the FCC Rules. Operation is subject to the following two conditions:

1. This device may not cause harmful interference.
2. This device must accept any interference received, including interference that may cause undesired operation.

EU Conformity Statement



This product and - if applicable - the supplied accessories too are marked with "CE" and comply therefore with the applicable harmonized European standards listed under the EMC Directive 2004/108/EC, the RoHS Directive 2011/65/EU.



2012/19/EU (WEEE directive): Products marked with this symbol cannot be disposed of as unsorted municipal waste in the European Union. For proper recycling, return this product to your local supplier upon the purchase of equivalent new equipment, or dispose of it at designated collection

points. For more information see: www.recyclethis.info



2006/66/EC (battery directive): This product contains a battery that cannot be disposed of as unsorted municipal waste in the European Union. See the product documentation for specific battery information. The battery is marked with this symbol, which may include lettering to indicate

cadmium (Cd), lead (Pb), or mercury (Hg). For proper recycling, return the battery to your supplier or to a designated collection point. For more information see: www.recyclethis.info

Industry Canada ICES-003 Compliance

This device meets the CAN ICES-3 (A)/NMB-3(A) standards requirements.



Safety Instruction

These instructions are intended to ensure that user can use the product correctly to avoid danger or property loss.

The precaution measure is divided into “Warnings” and “Cautions”

Warnings: Serious injury or death may occur if any of the warnings are neglected.

Cautions: Injury or equipment damage may occur if any of the cautions are neglected.

	
Warnings Follow these safeguards to prevent serious injury or death.	Cautions Follow these precautions to prevent potential injury or material damage.



Warnings

- Proper configuration of all passwords and other security settings is the responsibility of the installer and/or end-user.
- In the use of the product, you must be in strict compliance with the electrical safety regulations of the nation and region. Please refer to technical specifications for detailed information.
- Input voltage should meet both the SELV (Safety Extra Low Voltage) and the Limited Power Source with 100~240 VAC or 12 VDC according to the IEC60950-1 standard. Please refer to technical specifications for detailed information.
- Do not connect several devices to one power adapter as adapter overload may cause over-heating or a fire hazard.
- Please make sure that the plug is firmly connected to the power socket.
- If smoke, odor or noise rise from the device, turn off the power at once and unplug the power cable, and then please contact the service center.


Preventive and Cautionary Tips

Before connecting and operating your device, please be advised of the following tips:

- Ensure unit is installed in a well-ventilated, dust-free environment.
- Unit is designed for indoor use only.
- Keep all liquids away from the device.
- Ensure environmental conditions meet factory specifications.
- Ensure unit is properly secured to a rack or shelf. Major shocks or jolts to the unit as a result of dropping it may cause damage to the sensitive electronics within the unit.
- Use the device in conjunction with an UPS if possible.
- Power down the unit before connecting and disconnecting accessories and peripherals.
- A factory recommended HDD should be used for this device.
- Improper use or replacement of the battery may result in hazard of explosion. Replace with the same or equivalent type only. Dispose of used batteries according to the instructions provided by the battery manufacturer.

Symbol Conventions

The symbols that may be found in this document are defined as follows.

Symbol	Description
	Indicates a potentially hazardous situation, which if not avoided, could result in equipment damage, data loss, performance degradation, or unexpected results.

Chapter 1 Description of Panels

1.1 Front Panel

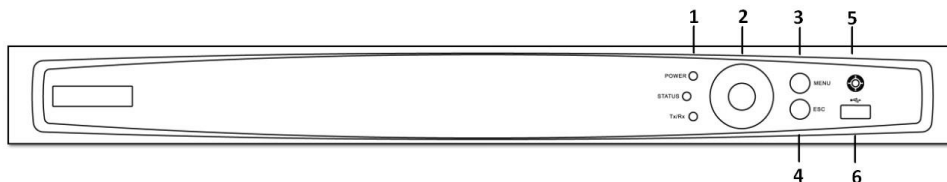


Figure 1. 1 Front Panel 2

Table 1. 1 Description of Front Panel 2

No.	Name	Function Description
1	POWER	Power indicator turns yellow when the power switch on the real panel is turned on.
	STATUS	Status indicator blinks red when data is being read from or written to HDD.
	Tx/Rx	Tx/Rx indicator blinks yellow when network connection is functioning properly.
2	DIRECTIONS	<p>The DIRECTION buttons are used to navigate between different fields and items in menus.</p> <p>In the Playback mode, the Up and Down button is used to speed up and slow down recorded video. The Left and Right button will select the next and previous record files.</p> <p>In Live View mode, these buttons can be used to cycle through channels.</p> <p>In PTZ control mode, it can control the movement of the PTZ camera.</p>
	ENTER	<p>The ENTER button is used to confirm selection in any of the menu modes.</p> <p>It can also be used to <i>tick</i> checkbox fields.</p> <p>In Playback mode, it can be used to play or pause the video.</p> <p>In single-frame Playback mode, pressing the button will advance the video by a single frame.</p>
3	Menu	Access the main menu interface
4	ESC	Exit and back to the previous menu.
5	IR Receiver	Receiver for IR remote controller.
6	USB Interfaces	Universal Serial Bus (USB) ports for additional devices such as USB mouse and USB Hard Disk Drive (HDD).

1.2 Rear Panel

Note:

The rear panel varies according to different models. Please refer to the actual product. The following figure is for reference only.

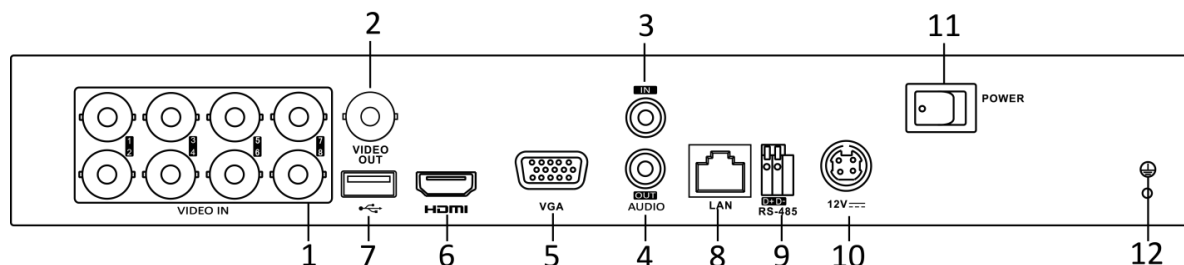


Figure 1. 2 Rear Panel

Table 1. 2 Description of Front Panel

No.	Item	Description
1	VIDEO IN	BNC interface for TVI and analog video input.
2	VIDEO OUT	BNC connector for video output.
3	AUDIO IN	RCA connector
4	AUDIO OUT	RCA Connector
5	VGA	DB15 connector for VGA output. Display local video output and menu.
6	HDMI	HDMI video output connector.DB15 connector for VGA output. Display local video output and menu.
7	USB Port	Universal Serial Bus (USB) port for additional devices.
8	Network Interface	Connector for network
9	RS-485	D+, D- pin connects to Ta, Tb pin of controller. For cascading devices, the first DVR's D+, D- pin should be connected with the D+, D- pin of the next DVR.
10	Power Supply	12VDC Power Input
11	Power Switch	Switch for turning on/off the device.
12	GND	Ground

Chapter 2 Installation and Connections

2.1 DVR Installation

During the installation of the DVR:

1. Use brackets for rack mounting.
2. Ensure there is ample room for audio and video cables.
3. When installing cables, ensure that the bend radius of the cables are no less than five times than its diameter.
4. Connect both the alarm and RS-485 cable.
5. Allow at least 2cm (≈0.75-inch) of space between racks mounted devices.
6. Ensure the DVR is grounded.
7. Environmental temperature should be within the range of -10 °C to 55 °C, 14 °F to 131 °F.
8. Environmental humidity should be within the range of 10% to 90%.

2.2 Hard Disk Installation

Before you start:

Before installing a hard disk drive (HDD), please make sure the power is disconnected from the DVR. A factory recommended HDD should be used for this installation.

One or two SATA hard disks can be installed depending on different models.

Tools Required: Screwdriver.

Note:

As the installation steps of HDD are similar among different models, here we take one model as an example.

Steps:

1. Remove the cover from the DVR by unfastening the screws on the back and side.



Figure 2. 1 Remove the Cover

2. Connect one end of the data cable to the motherboard of DVR and the other end to the HDD.

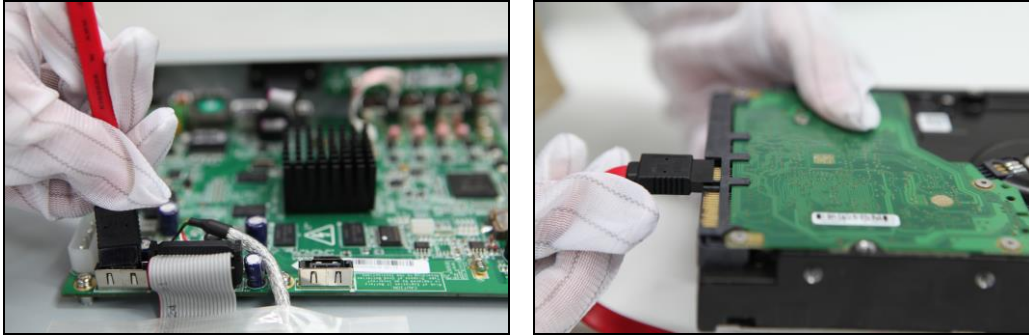


Figure 2. 2 Connect the Data Cable

3. Connect the power cable to the HDD.

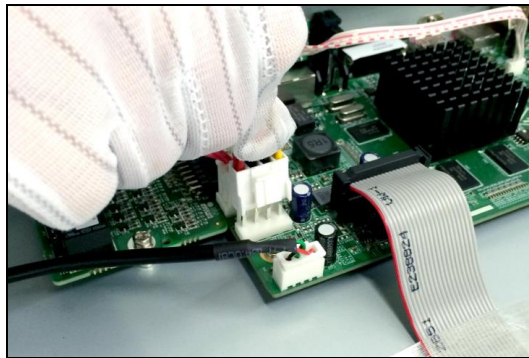


Figure 2. 3 Connect the Power Cable

4. Place the HDD on the bottom of the device and then fasten the screws on the bottom to fix the HDD.



Figure 2. 4 Install the HDD

5. Re-install the cover of the DVR and fasten screws.

2.3 RS-485 and Controller Connection

Typical Connection :

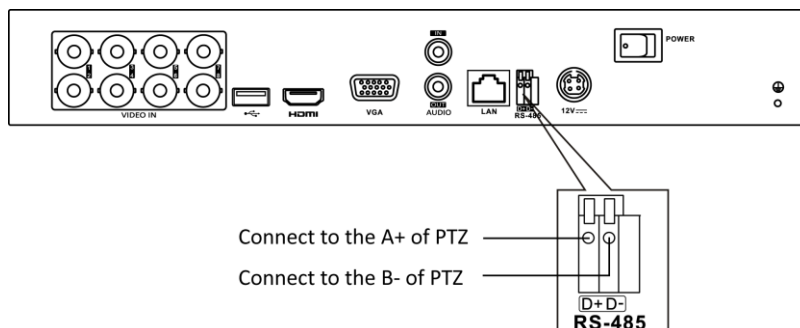


Figure 2. 5 Controller Connection A

To connect PTZ to the DVR:

1. Disconnect *pluggable block* from the RS-485 terminal block.
2. Press and hold the orange part of the *pluggable block*; insert signal cables into slots and release the orange part. Ensure signal cables are in tight.
3. Connect A+ on PTZ to D+ on terminal block and B- on controller to D- on terminal block. Fasten stop screws.
4. Connect *pluggable block* back into terminal block.

Note:

Make sure both the controller and DVR are grounded.

2.4 HDD Storage Calculation Chart

The following chart shows an estimation of storage space used based on recording at one channel for an hour at a fixed bit rate.

Bit Rate	Storage Used
96K	42M
128K	56M
160K	70M
192K	84M
224K	98M
256K	112M
320K	140M
384K	168M
448K	196M
512K	225M
640K	281M
768K	337M
896K	393M
1024K	450M
1280K	562M
1536K	675M
1792K	787M
2048K	900M
4096K	1.76G
8192K	3.52G
16384K	7.03G

Note:

Please note that supplied values for storage space used are just for reference. Storage space used is estimated by formulas and may have some deviation from actual value.

Chapter 3 Menu Operation

3.1 Menu Structure

Note:

The menu structure varies according to different models.

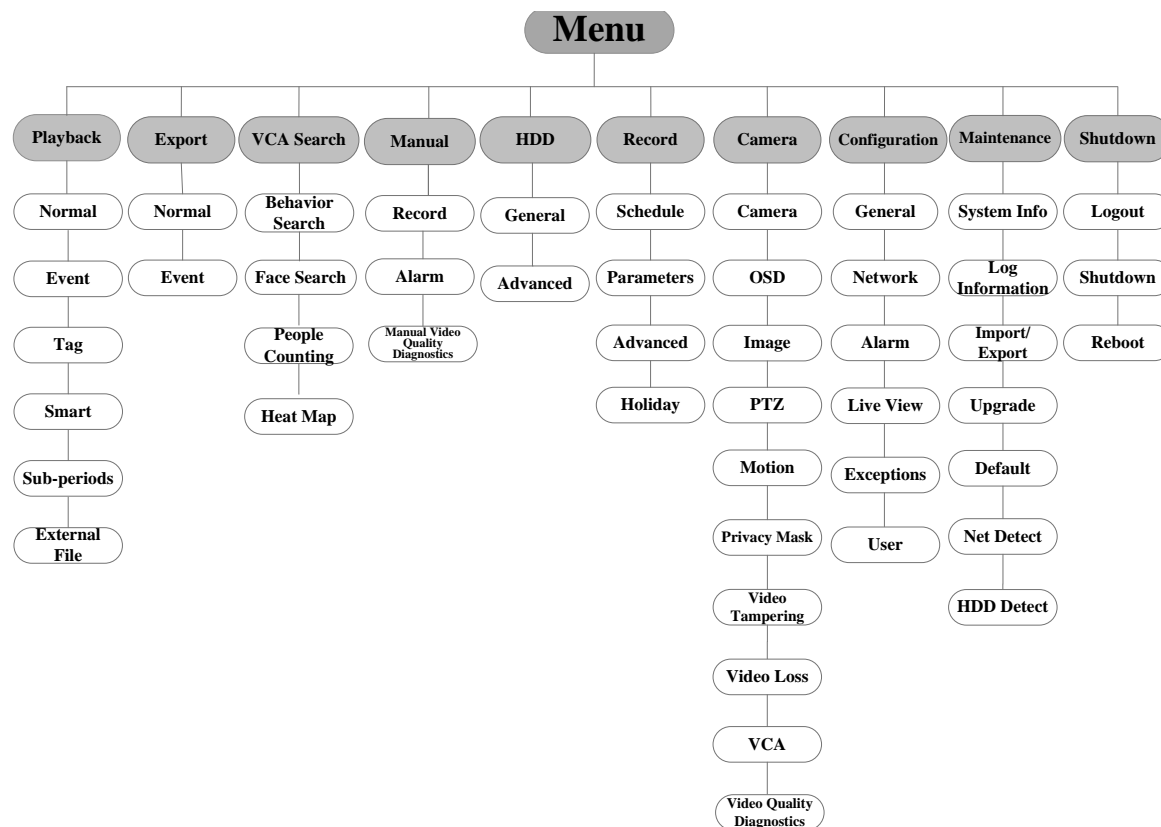


Figure 3. 1 Menu Structure

3.2 Startup and Shutdown

Proper startup and shutdown procedures are crucial to expanding the life of the DVR.

To start your DVR:

1. Check the power supply is plugged into an electrical outlet. It is **HIGHLY** recommended that an Uninterruptible Power Supply (UPS) be used in conjunction with the device. The Power button) on the front panel should be red, indicating the device is receiving the power.
2. Press the POWER button on the front panel. The Power LED should turn blue. The unit will begin to start. After the device starts up, the wizard will guide you through the initial settings, including modifying

password, date and time settings, network settings, HDD initializing, and recording.

To shut down the DVR:

1. Enter the Shutdown menu.

Menu > Shutdown

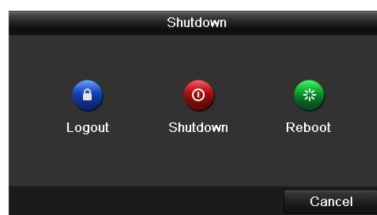


Figure 3. 2 Shutdown

2. Select the **Shutdown** button.
3. Click the **Yes** button.

3.3 Activating Your Device

Purpose:

For the first-time access, you need to activate the device by setting an admin password. No operation is allowed before activation. You can also activate the device via Web Browser, SADP or client software.

Steps:

1. Input the same password in the text field of **Create New Password** and **Confirm New Password**.

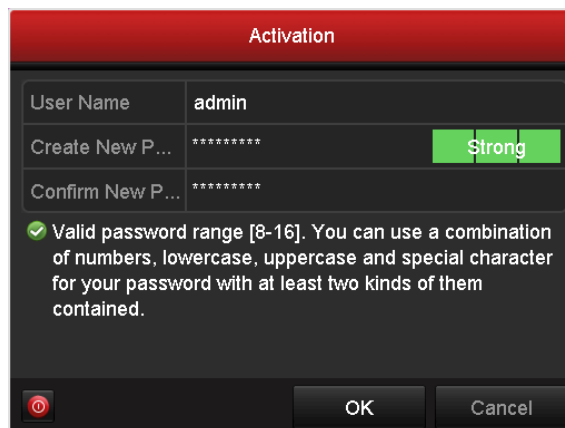


Figure 3. 3 Set Admin Password



STRONG PASSWORD RECOMMENDED– We highly recommend you create a strong password of your own choosing (using a minimum of 8 characters, including upper case letters, lower case letters, numbers, and special characters) in order to increase the security of your product. And we recommend you reset your password regularly, especially in the high security system, resetting the password monthly or weekly can better protect your product.

2. Click **OK** to save the password and activate the device.

Note:

For the old version device, if you upgrade it to the new version, the following dialog box will pop up once the

device starts up. You can click **YES** and follow the wizard to set a strong password.

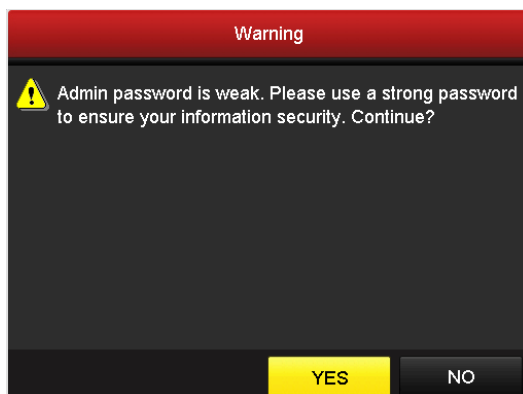


Figure 3. 4 Warning of Weak Password

3.4 Login and Logout

User Login

Purpose:

You have to log in to the device before operating the menu and other functions.

Steps:

1. Select the **User Name** in the dropdown list.

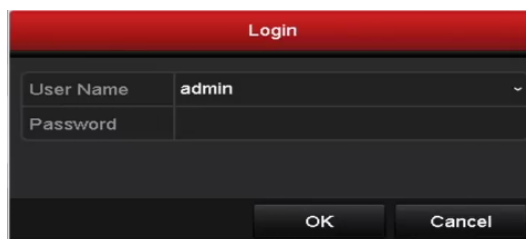


Figure 3. 5 Login

2. Input **Password**.
3. Click **OK** to log in.

Note:

In the Login interface, for the admin, if you have entered the wrong password for 7 times, the account will be locked for 60 seconds. For the operator, if you have entered the wrong password for 5 times, the account will be locked for 60 seconds.

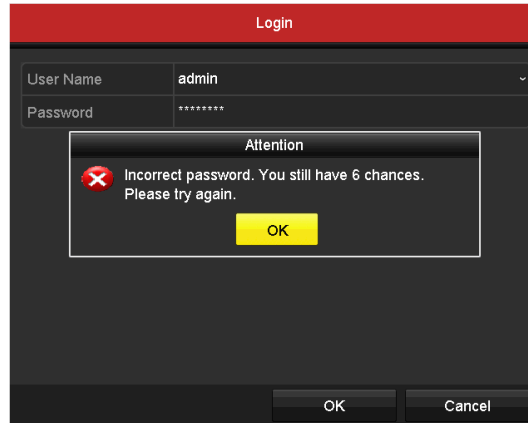


Figure 3. 6 User Account Protection for the Admin

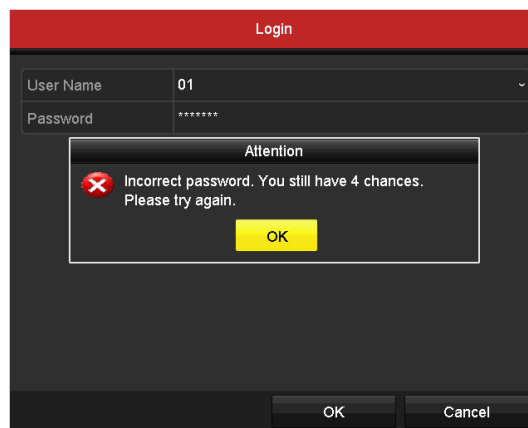


Figure 3. 7 User Account Protection for the Operator

User Logout

Steps:

1. Enter the Shutdown menu.
Menu > Shutdown

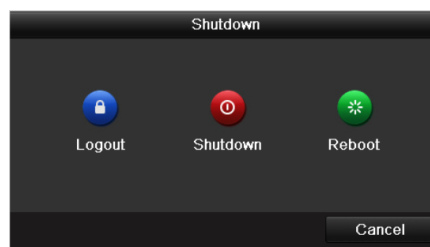


Figure 3. 8 Logout

2. Click **Logout**.

Note:

After you have logged out the system, menu operation on the screen is invalid. It is required to input a user name and password to unlock the system.

3.5 Configuring the Signal Input

After the startup and login, the device system enters the Wizard for configuring the signal input.

Steps:

1. Check the checkbox to select different signal input types: TVI, AHD/CVBS or IP.
2. Click **Apply** to save the settings.

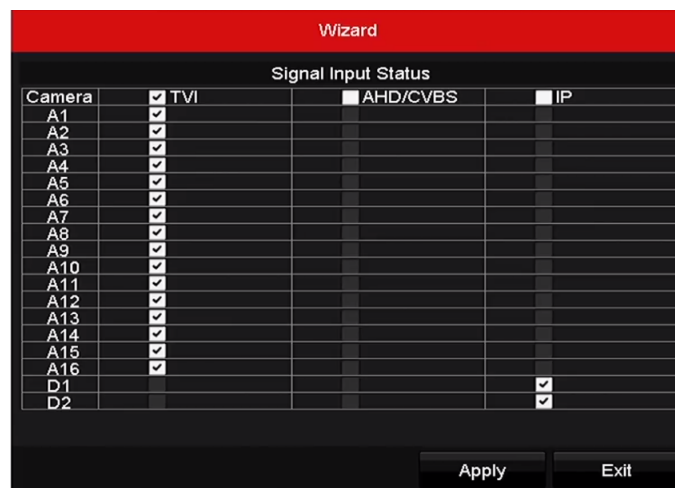


Figure 3.9 Configure Signal Input Type

Note:

You can also click Menu > Camera > Signal Input Status to configure the signal input.

Steps:

1. Enter the **Signal Input Status** interface.
Menu > Camera > Signal Input Status
2. Check the checkbox to select different signal input types: TVI, AHD/CVBS or IP.

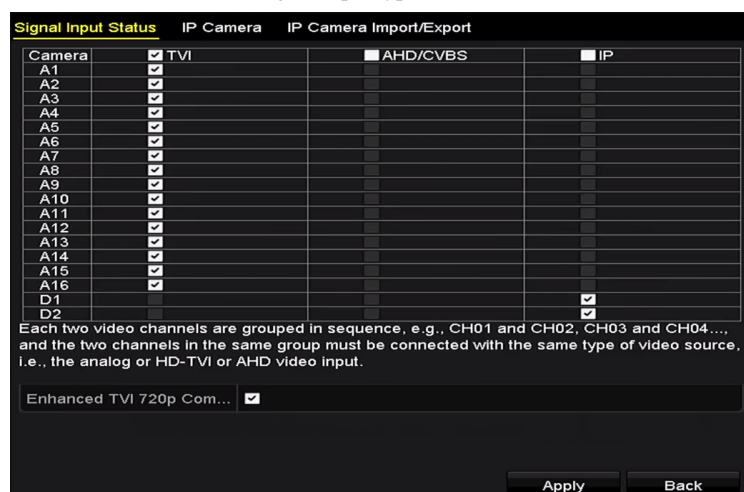


Figure 3.10 Configure Signal Input Type

3. Check the checkbox of **Enhanced TVI 720p Compatibility** to enable the compatibility of TVI 720p signal input. The hint box pops up if you check the checkbox.



Figure 3.11 Hint Box

4. Click **OK**.
5. Click **Apply** to save the settings.

Note:

- Each two video channels are grouped in sequence, e.g., CH01 and CH02, CH03 and CH04, etc., and the two channels in the same group must be connected with the same type of video source, i.e., the analog or HD-TVI or AHD video input.
- In the live view interface, when there is no video signal of the analog channel, the corresponding connectable video signal type message can be displayed on the screen.

3.6 Using the Setup Wizard

The Setup Wizard can walk you through some important settings of the device. By default, the Setup Wizard starts once the device has loaded.

Check the checkbox to enable Setup Wizard when device starts. Click **Next** to continue the setup wizard. Follow the guide of the Setup Wizard to configure the system resolution, system date/time, network settings, HDD management, record settings, etc.

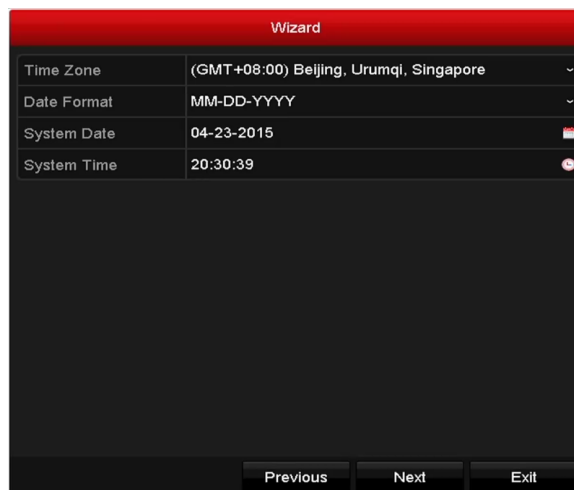


Figure 3.12 Wizard

3.7 Network Settings

Purpose:

Network settings must be properly configured before you operate DVR over network.

Steps:

1. Enter the Network Settings interface.

Menu > Configuration > Network

Working Mode	Net Fault-tolerance		
Select NIC	bond0		
NIC Type	10M/100M/1000M Self-adaptive		
Enable DHCP	<input checked="" type="checkbox"/>		
IPv4 Address	10 . 16 . 1 . 16	IPv6 Address	fe80::240:43ff:fe2f:7cfb/64
IPv4 Subnet	255 . 255 . 255 . 0	IPv6 Address	
IPv4 Default Gateway	10 . 16 . 1 . 254	IPv6 Default Gateway	
MAC Address	00:40:43:2f:7c:fb		
MTU(Bytes)	1500		
Preferred DNS Server	10.1.7.88		
Alternate DNS Server	10.1.7.77		
Main NIC	LAN1		
<input type="button" value="Apply"/> <input type="button" value="Back"/>			

Figure 3. 13 Network Settings

2. Select the **General** tab.
3. In the **General Settings** interface, you can configure the following settings: NIC Type, IPv4 Address, IPv4 Gateway, MTU and DNS Server.
If the DHCP server is available, you can check the checkbox of **DHCP** to automatically obtain an IP address and other network settings from that server.
4. After having configured the general settings, click the **Apply** button to save the settings.

3.8 Adding IP Cameras

Purpose:

Before you can get live video or record the video files, you should add the network cameras to the connection list of the device.

Before you start:

Ensure the network connection is valid and correct, and the IP camera to add has already been activated.

Steps:

1. Select the **Add IP Camera** option from the right-click menu in live view mode or click Menu> Camera> Camera to enter the IP camera management interface.

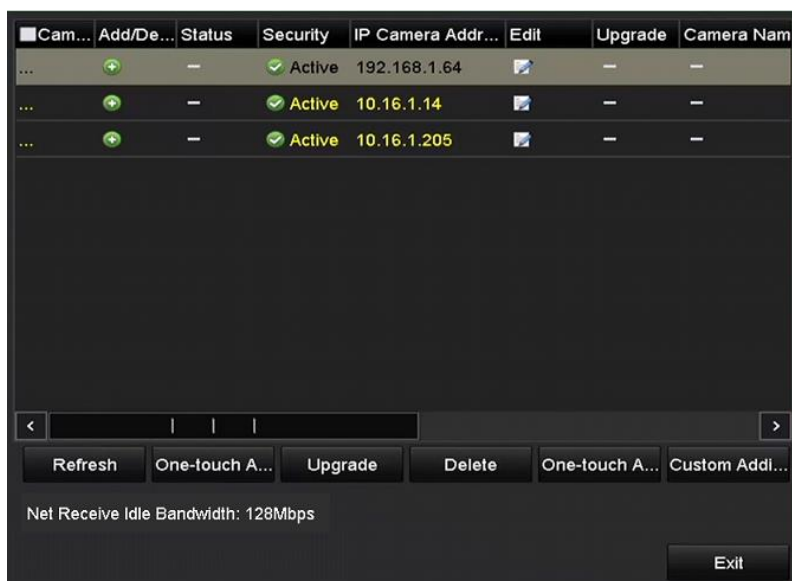


Figure 3. 14 IP Camera Management


2. Select the IP camera from the list and click the  button to add the camera (with the same admin password of the DVR's), or click the **Custom Adding** button to pop up the Add IP Camera (Custom) interface.



Figure 3. 15 Add IP Camera

3. Select the detected IP camera and click the **Add** button to add it directly, and you can click the **Search** button to refresh the online IP camera manually.
 Or you can choose to custom add the IP camera by editing the parameters in the corresponding text field and then click the **Add** button to add it.

3.9 Live View

Some icons are provided on screen in Live View mode to indicate different camera status. These icons include:

Live View Icons

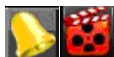
In the live view mode, there are icons at the right top of the screen for each channel, showing the status of the record and alarm in the channel, so that you can find problems as soon as possible.



Indicating that there is an alarm or are alarms. Alarm includes video loss, tampering, motion detection or sensor alarm, etc.



Recording (manual record, continuous record, motion detection or alarm triggered record)



Alarm & Recording



Event/Exception (event and exception information, appears at the lower-left corner of the screen.)

3.10 Recording Settings

Before you start:

Make sure that the disk has already been installed. If not, please install a disk and initialize it. You may refer to the user manual for detailed information.

Purpose:

Two kinds of record types are introduced in the following section, including Instant Record and All-day Record. And for other record types, you may refer to the user manual for detailed information.

Note:

After rebooting all the manual records enabled are canceled.

Steps:

1. On the live view window, right click the window and move the cursor to the **Start Recording** option, and select **Continuous Record** or **Motion Detection Record** on your demand.

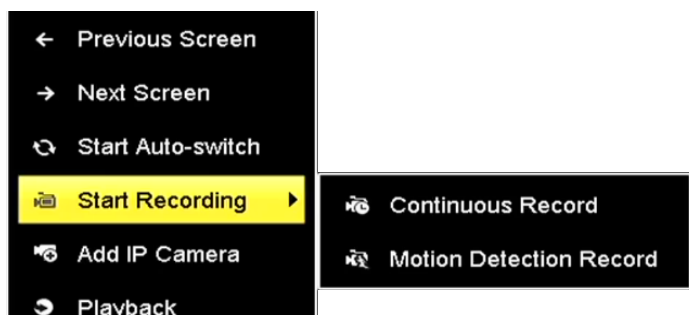


Figure 3. 16 Start Recording from Right-Click Menu

2. Click the **Yes** button in the pop-up Attention message box to confirm the settings. All the channels will start to record in the selected mode.

3.11 Playback

The recorded video files on the hard disk can be played back in the following modes: instant playback, all-day playback for the specified channel, and playback by normal/event/smart/tag/sub-periods/external file search.

Steps:

1. Enter playback interface.
Click Menu>Playback or select Playback from the right-click menu
2. Check the checkbox of channel(s) in the channel list and then double-click to select a date on the calendar.
3. You can use the toolbar in the bottom part of Playback interface to control playing progress.



Figure 3. 17 Playback Interface

4. Select the channel(s) you want to play back by checking the checkbox(s), or execute simultaneous playback of multiple channels.

Chapter 4 Accessing by Web Browser



You shall acknowledge that the use of the product with Internet access might be under network security risks. For avoidance of any network attacks and information leakage, please strengthen your own protection. If the product does not work properly, please contact with your dealer or the nearest service center.

Purpose:

You can get access to the device via web browser. You may use one of the following listed web browsers: Internet Explorer 6.0, Internet Explorer 7.0, Internet Explorer 8.0, Internet Explorer 9.0, Internet Explorer 10.0, Apple Safari, Mozilla Firefox, and Google Chrome. The supported resolutions include 1024*768 and above.

Steps:

1. Open web browser, input the IP address of the device and then press Enter.
2. Log in to the device.
 - If the device has not been activated, you need to activate the device first before login.

The screenshot shows a web browser window titled "Activation". It contains a form with the following fields and elements:

- User Name:** A text input field containing the text "admin".
- Password:** A password input field with a green checkmark icon to its right. Below the field is a green progress bar and the word "Strong".
- Confirm:** A second password input field for confirmation.
- OK:** A button located at the bottom right of the form.
- Instructions:** Text below the password field reads: "Valid password range [8-16]. You can use a combination of numbers, lowercase, uppercase and special character for your password with at least two kinds of them contained."

Figure 4. 1 Set Admin Password

- 1) Set the password for the admin user account.
- 2) Click **OK** to log in to the device.



STRONG PASSWORD RECOMMENDED– We highly recommend you create a strong password of your own choosing (using a minimum of 8 characters, including upper case letters, lower case letters, numbers, and special characters) in order to increase the security of your product. And we recommend you reset your password regularly, especially in the high security system, resetting the password monthly or weekly can better protect your product.

- If the device is already activated, enter the user name and password in the login interface, and click the **Login** button.

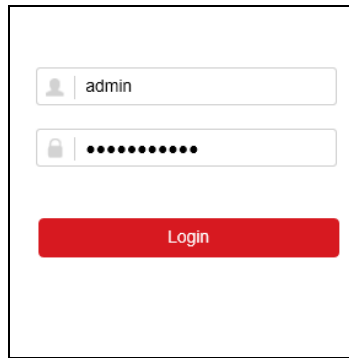


Figure 4. 2 Login

-
3. Install the plug-in before viewing the live video and managing the camera. Please follow the installation prompts to install the plug-in.

Note:

You may have to close the web browser to finish the installation of the plug-in.

After login, you can perform the operation and configuration of the device, including the live view, playback, log search, configuration, etc.

Mobile Phone Access

You shall acknowledge that the use of the product with Internet access might be under network security risks. To mitigate network attacks and information leakage, please ensure the network is protected. If the product does not work properly, please contact your dealer or the nearest service center.

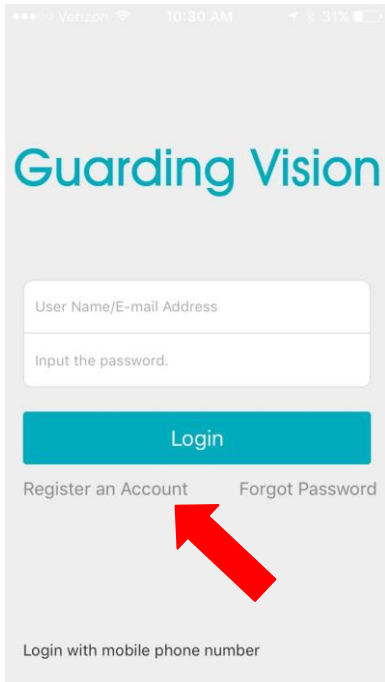
Purpose:

Once the device is configured on the network, and there are no restrictions in place preventing the recorder from accessing the internet, you can access the NVR from a mobile device to view live video as well as playback.

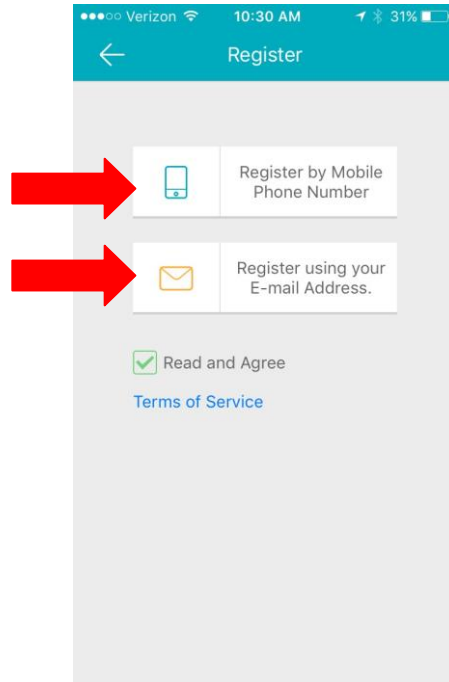
Steps:

1. Download the "Guarding Vision" application onto the mobile device(s) that will be accessing the NVR
2. If no cloud P2P account has been created, click on the [Register an Account] button.
 - Once the account has been created, and DVR/NVR added, simply sign in to access the recorder.
 - If the NVR/TVR has not been activated, activate the device first before using the mobile app.
 - This tutorial covers Cloud P2P connection. DDNS and direct IP are other options, but not covered here.



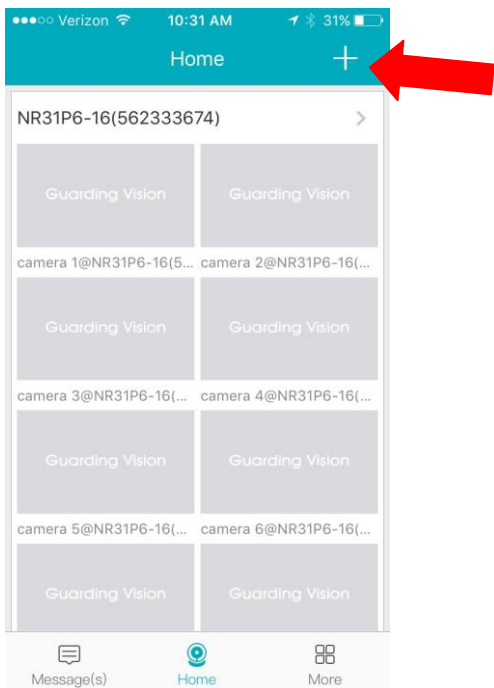


Click [Register an Account]

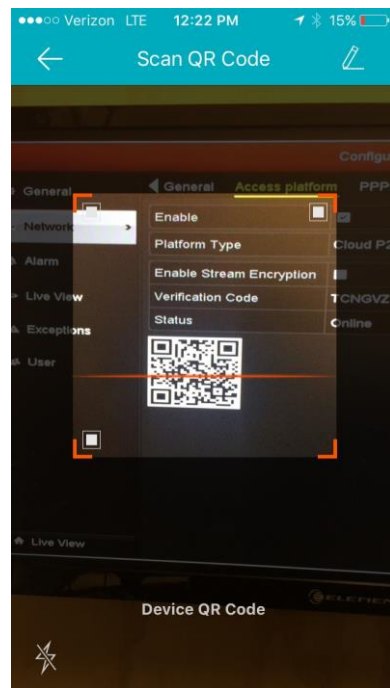


Register by phone or email

3. After registering the account, you will need to verify by cell phone or email address.



Click on the [+] icon to add a new device



Scan the QR code from the NVR/DV

4. After creating the cloud account, click on the [+] icon to add a new device, scan the QR code located in the MENU>CONFIGURATION>NETWORK>PLATFORM ACCESS menu directly on the NVR/TVR.