



HD**bridge**2000 SERIES

**Smarter, High-Density
HD Video Distribution Over Coax**

HD**b**2840

ZeeVee's HD**b**2840 encoder/modulator converts unencrypted HDMI video sources such as signage players into digital cable channels that are **broadcast over existing coax cabling to an unlimited number of HDTVs.**



PLUS a bonus 5th Channel! — You can save a short video loop to the internal memory and use it as an additional signage channel.

IDEAL USES:

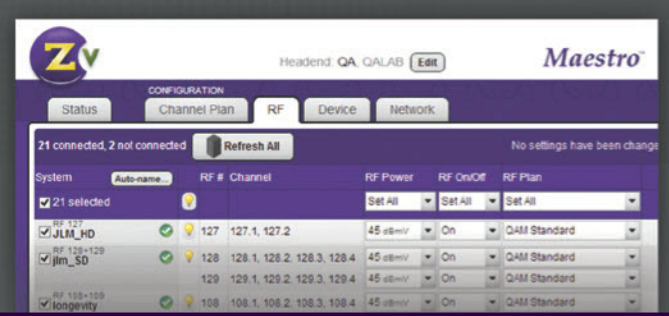
- Distribute HD video throughout your facility
- Replace multiple signage players
- Commercial or residential

Advanced Management:

- Maestro Headend Management Software
- Front-Panel Color LCD
- Local and/or Remote Configuration

Compatibility:

- Use Existing Coax Cabling
- Compatible with any HDTV
- MPEG2 Video and AC3 Audio Encoding
- QAM Output



VIDEO INPUT	HDMI Video	4 ports per model
	Closed Caption	EIA/CEA-608 captions accepted over composite video input (-NA versions only)
	Internal Memory	MPEG-2 Program Stream file, up to 400MB
AUDIO INPUT	Analog Audio Input	75 Ohm 0 to 0.7v at Line-level output. Stereo input on industry standard 3.5mm pigtail connector
	Digital Audio	Digital as element of HDMI 1.3 port
	Encoding	Internally encoded into Dolby® Digital AC-3 or MPEG1 Layer 2 (varies by region)
VIDEO ENCODER	Encoder Video Profile	MPEG2 HD Profile 2: ISO13818-2 MP@HL
	Traffic Shaping	Variable Bit Rate
	Video Transport Bit Rate	49.76 Mbps
	Video Encoding Data Rates	Variable, 10 Mbs - 24 Mbs per channel
	Average Encoding Data Rate	18 Mbs per channel
	Encoding Latency	Programmable 100 msec to 400 msec
	Color Profile	4:2:0
	GOP Size	24
	Video, Audio PID	Programmable
	Program Information	Programmable
AUDIO ENC.	Audio Encoder	
	Encoder Audio Profile	ATSC A/52, Dolby® Digital (AC-3) or Mpeg 2 layer 1 (varies by region)
MODULATOR / UPCONVERTER	Modulation Types	QAM 256 (ITU-T J83 Annex B) Interleaving modes: (64,2) only OR DVB-T, DVB-C, QAM 256 (ITU-T J83 Annex A) (varies by region)
	Cable Standard	HRC, IRC or STD or User defined (varies by region)
	Frequency Range	Frequency Agile from 54 to 864MHz <ul style="list-style-type: none"> • 2 kHz resolution • +/- 30 ppm accuracy • +/- 35 ppm stability
	Output Power	+45 dBmV typical
	Output Level Adjust	25 - 45 dBmV in 1dBmV steps
	MER	38 dB typical
	I/Q Amplitude Imbalance	< 1% typical
Spectral Tilt	<= 1dB over 6MHz typical	
CONTROL / SETUP	Network interface	10/100 mb Ethernet via RJ45 connection IP address via DHCP or set by user HTML/Javascript served web interface for easy configuration Telnet connection for CLI scripting Easy firmware updates All settings saved in NV storage
	Front Panel Color Display	Quickly obtain status at a glance
GENERAL	Power	100-240VAC 50/60Hz, 60W max. 30W Typical. IEC 60320-C14
	Cooling	Dual Internal cooling fans, Front Inlet, Rear Exhaust
	Enclosure Type	Metal
	Enclosure Dimensions	1.72" H x 17.33" W (without rack mount ears) x 9.9" D 43.6mm H x 440.2mm W x 251.5mm D
	System Weight	6.25lb (2.84 kg)
	Carton Dimensions (individual)	4.25" H 30.875" W 12.125" D 108 mm H 785 mm W 308 mm D
	Shipping Weight	7.88 lbs (3.58 kg)
	Temperature/Humidity	Operating + 32F to + 113F (0C to + 45C) / 10% to 80%, non-condensing
	Vibration	NSTA 1A in carton
	MTBF	45,000 hours
	Compliance	FCC Class A, IEC60065, EN61000 (see manual for specifics), CE, RoHS
	Part number	HB2840-NA, HD b2840-EU
	Model name	HD b2840
Warranty	2 years	